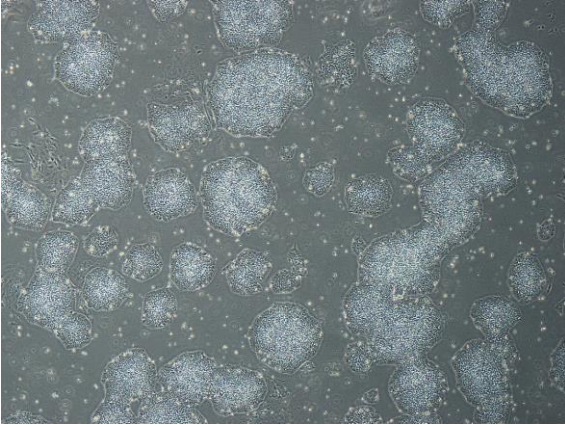
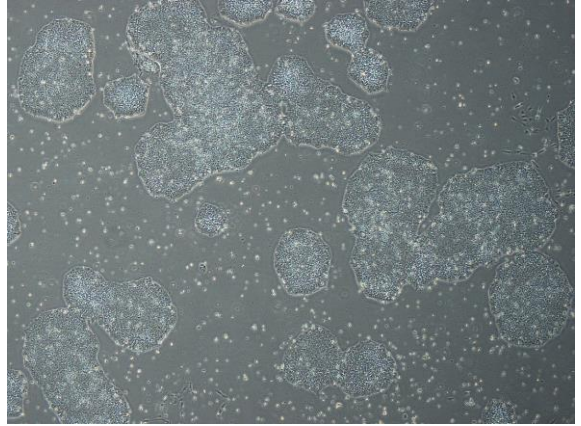


## 【 CiRA-j-1070 】 Morphology of iPSC colonies

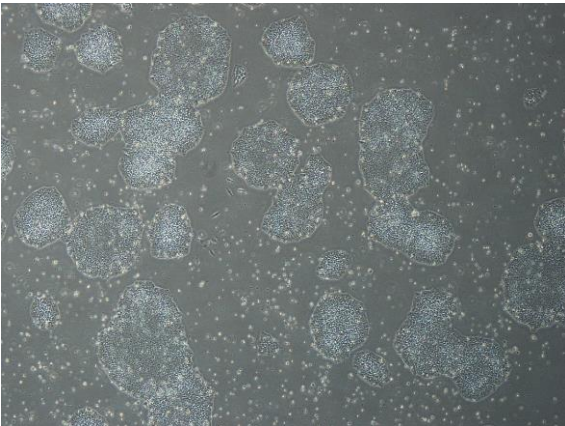
CiRA-j-1070-A: passage-2



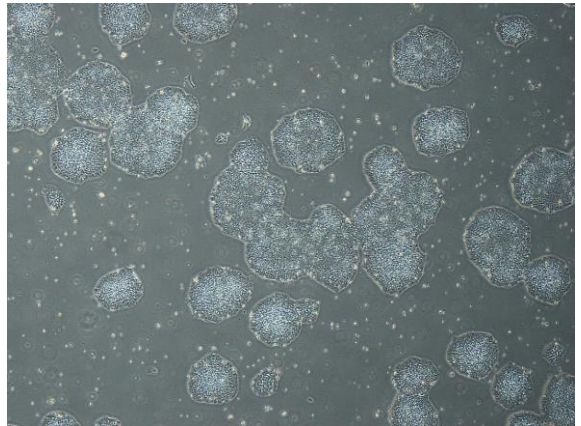
CiRA-j-1070-B: passage-2



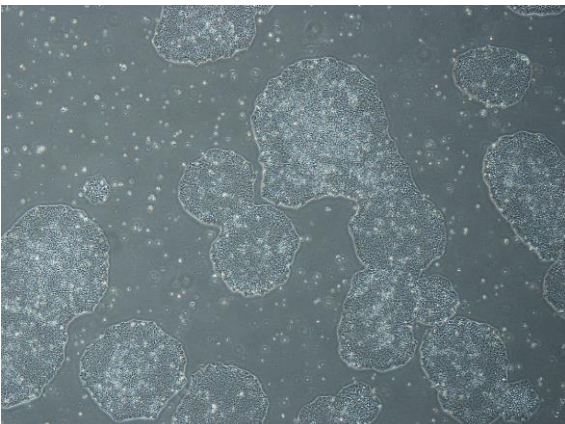
CiRA-j-1070-C: passage-2



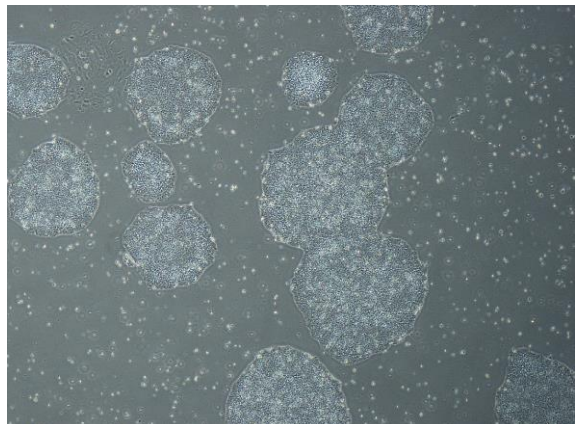
CiRA-j-1070-D: passage-2



CiRA-j-1070-E: passage-2



CiRA-j-1070-F: passage-2



( All images were captured at 4x magnification )